



# Technical Support Knowledge Base

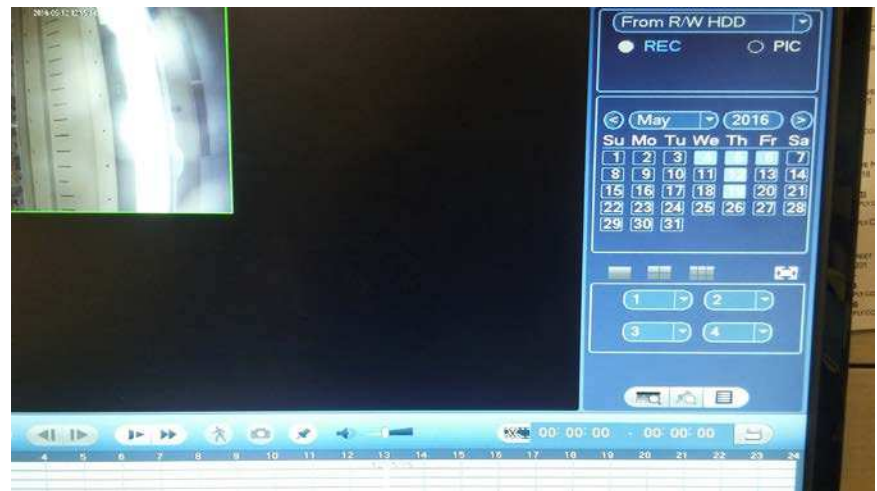
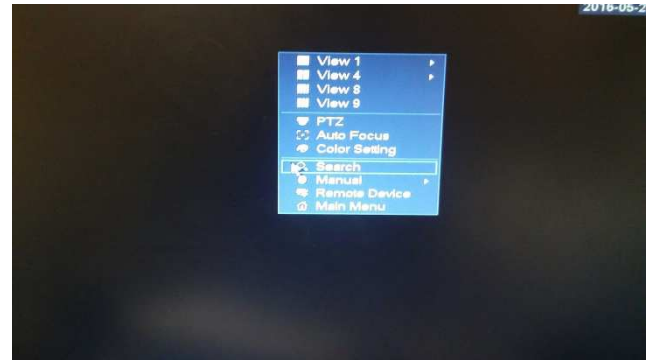
## eLine Tribrid DVR and NVR's

### Search Mode and Export procedure

#### Basic search:

From Live camera view:

- Right-click and choose SEARCH [FIG. 1]
- Click the calendar DATE for playback [FIG. 2]  
Light blue = recorded video on that date
- Select the channel grid and camera selection (below the calendar)
- Click on a colored area in the timeline at the bottom  
Yellow = Motion  
Green = Manual/Constant  
Red = Alarm
- The timeline displays 24hrs by default, to decrease the span of time, click on the + icons labeled 2hr / 1 hr / 30min (bottom right corner)
- To change the selected camera, you must stop the playback first.



#### Exporting video: 2 Methods

Method 1:

- From live screen, plug in a USB flash drive, and wait for the selection window to appear
- Click on FILE BACKUP [FIG. 3]
- Input the Start time / End time [FIG. 4]
- Choose the RECORD CHANNEL that you want to backup
- Choose the FILE FORMAT  
DAV = Will need the video player  
ASF = Will playback through Windows Media Player
- Click ADD
- Any file found for the time frame indicated will populate in the backup box. Put a checkmark in each file you want to export
- Click BACKUP
- A progress bar will appear and when complete, you can remove the USB drive



Method 2:

- From live screen, right click and choose MAIN MENU
- Login
- Click the BACKUP icon on the top row
- **Follow steps 3-9 from Method 1 above**

